

# EXPAND YOUR HORIZONS



PRODUCT CATALOGUE







# DOCKS AND LIFTS, FOR YOUR SUMMER ON THE WATER

Bertrand Docks has been designing and manufacturing permanent, floating, and rolling docks and watercraft lifts since 1995.

Ingenuity, quality and durability are the hallmarks of our exclusive products, which are meticulously planned and tested. We select only the finest materials, and our products meet the highest quality standards.

Make the most of summer! Our products require little or no maintenance.

Whether you are looking for a standard or customized, residential or commercial product, we can advise you on a dock or lift adapted to your waterfront setting, in keeping with your tastes and budget.

# DOCKS ON POSTS DOCKS ON WHEELS SYNONYMOUS WITH LIGHTWEIGHT

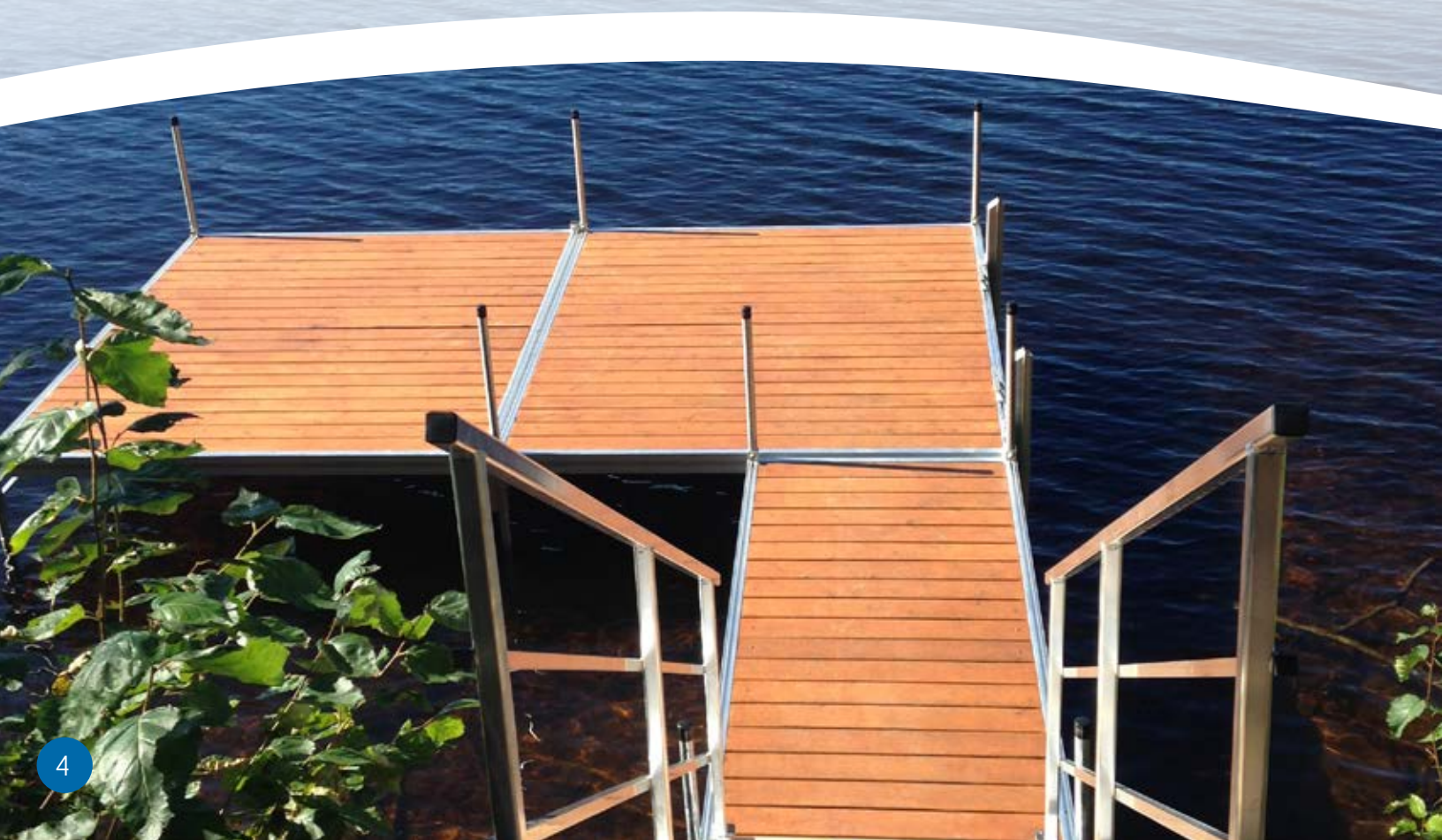
Designed to last, our docks on posts or wheels are manufactured with a modular system. We can therefore create a dock suitable for any location. Our removable, interchangeable panels mean that your dock can be easily manipulated over the years. With our docks on wheels, installation and removal have never been easier!

## ADVANTAGES AND FEATURES

- Modular system
- Unlimited configuration possibilities
- Track for accessories (no drilling)
- Aluminum structure (durable, corrosion resistant, maintenance free)
- Removable panels for easy handling (wood, aluminum, X-Wave)
- Stainless steel bolts and screws
- Galvanized steel posts
- Vinyl post caps
- Red cedar, coloured plastic or aluminum decking
- Easy installation requiring 1 or 2 people

## 10', 15', AND 20' DOCKS ON POSTS INCLUDE

- 1 aluminum structure
- Wood, plastic or aluminum decking
- 2 bottom plates 7" x 7"
- 2 galvanized 6' posts
- 2 post caps
- 2 hinges



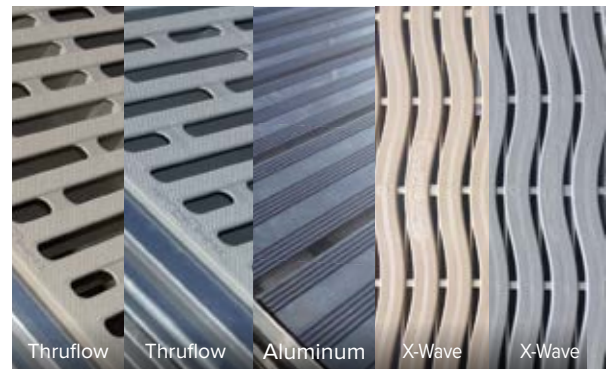
## WEIGHT OF THE FRAME

DIMENSIONS	10'	15'	20' (WITH BRACES)	WEIGHT OF THE CEDAR PER 5' PANEL
28"	60 lb.	89 lb.	156 lb.	32 lb.
4'	69 lb.	104 lb.	170 lb.	45 lb.
5'	74 lb.	111 lb.	176 lb.	61 lb.
6'	84 lb.	118 lb.	180 lb.	74 lb.
8' (with braces)	102 lb.	140 lb.	190 lb.	96 lb.



### WOOD

Western red cedar gives our docks on posts an inviting appearance that blends perfectly with the setting. The wood's natural resistance makes it very durable.



### PLASTIC OR ALUMINUM DECKING

Our docks on posts made of anti-slip plastic are available in beige or grey. They are very lightweight, have a long service life, and require very little maintenance. The robust quality of the aluminum decking is ideal for high-use areas.



### WITH TRIANGULAR BRACES

All of our docks on posts that are 20' or longer and 8' or wider are reinforced with triangular braces, ensuring maximum stability.



2<sup>nd</sup> axle available as an option

### WITH WHEELS

10', 15', and 20' wheel docks include:

- 1 aluminum structure with 45° brace
- Wood, plastic or aluminum decking
- 1 axle with wheels
- 2 galvanized 6' posts
- 2 post caps
- 2 hinges



# RESIDENTIAL FLOATING DOCKS

Our residential floating docks are perfect for deep water or where water levels vary significantly.

## ADVANTAGES AND FEATURES

- Aluminum structure (durable, corrosion resistant, and maintenance free)
- Stainless steel bolts
- Standard chain attachments
- Connecting hinges
- Insulated 12"- or 16"- high floating drums
- Decking options (cedar, plastic or aluminum)
- For deep water or where water levels vary significantly
- Sold per square foot



## SWIMMING RAFT

Swimming rafts include:

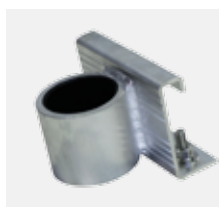
- 1 aluminum structure
- 12" floating drums
- Standard chain attachments
- Decking options (cedar, plastic or aluminum)



## FOR RESIDENTIAL FLOATING DOCKS



Connecting hinges



Nylon rod holder

## FOR RESIDENTIAL AND COMMERCIAL FLOATING DOCKS



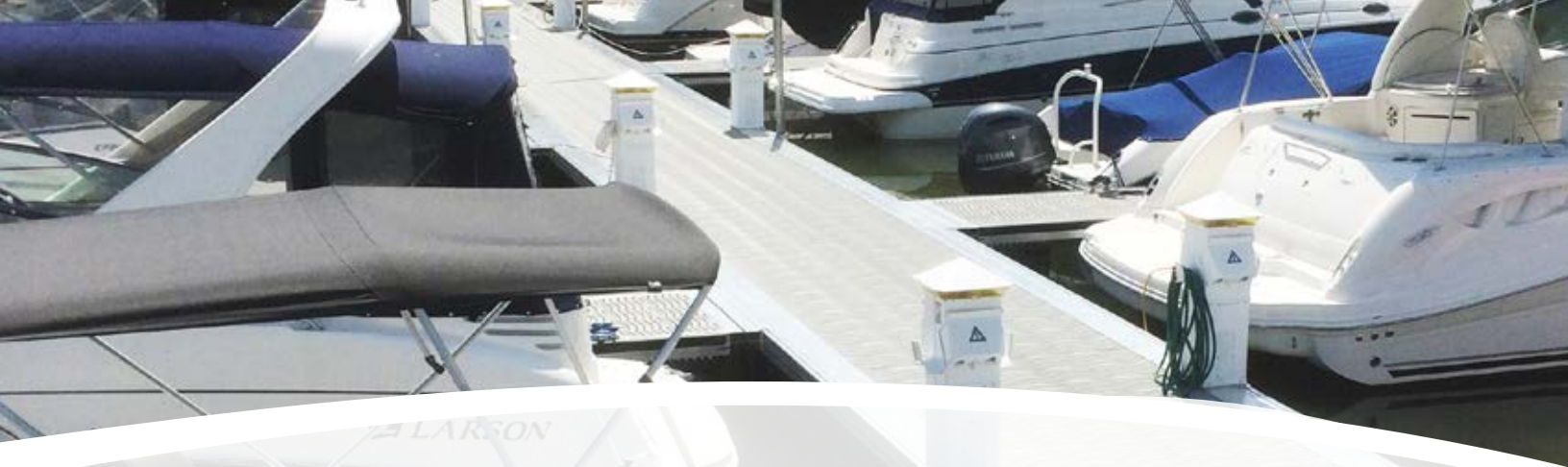
Transport wheel



Corner bumpers



Chain attachment



# COMMERCIAL FLOATING DOCKS

A must-have for marinas, private clubs, municipalities, recreational harbours and other large-scale projects.

## ADVANTAGES AND FEATURES

- Aluminum structure, 6000 marine grade
- Vast choice of lateral extruded aluminum profiles
- Diagonal and lateral bracing for greater stability of floating docks
- Sliding track system on 3 sides for easy installation of accessories
- Connecting hinges on track system for easy width adjustment between fingers for different-sized boats
- Reinforced and semi-rigid elastomer Flexi-bloc hinge
- Buoyancy of 30 to 50 lb/ft<sup>2</sup> (146 to 245 kg/m<sup>2</sup>) or more, available on request
- Polyethylene rotomolded floats (HDPE) with minimum 3/16" wall thickness filled with expanded polystyrene (EPS) with a density of 1 lb/pi<sup>3</sup> (16 kg/m<sup>3</sup>) or more, available on request
- Freeboard from 12" to 24" (300 mm to 600 mm) or more, available on request
- Optional channel and service pedestal for sanitary systems, electrical conduits and others
- Mooring system possible with chain and mooring buoy, pillar, vertical rail, horizontal arm anchor, elastic strap, cables, etc.



Cleats 8", 10" or 12"



Plastic or aluminum decking



Flexi-bloc connecting hinge



# DOCK ACCESSORIES

## ACCESSORIES THAT MAKE A DIFFERENCE



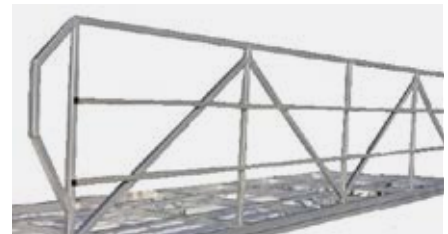
### CLEATS 8"

8" cleat in aluminum with stainless steel hardware. No drilling of the track system required.



### CLEATS 10"

10" cleat in aluminum with stainless steel hardware. No drilling of the track system required.



### 42" HAND RAIL

Hand rail made of welded aluminum tubes, installed directly on the track system.



### MOORING WHIP PLATE

Mooring plate allows you to firmly anchor your mooring whips to the track system. Movable, no drilling required. Sold in pairs.



### BENCH

Two-person bench in cedar and aluminum with 2 cup holders. Is installed on and moves along the track system.



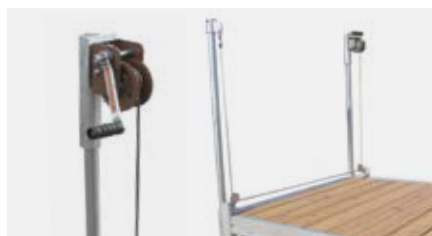
### LADDER

In welded aluminum with choice of 3, 4, or 5 steps.



### DOUBLE KAYAK RACK

Adjustable rack, 22" deep for storing 2 kayakers to free up space on the dock.



### SINGLE OR DOUBLE ADJUSTMENT WINCH

Allows the dock height to be adjusted, one or two corners at a time, by one person alone, without going into the water.



### STAIRS

Height-adjustable stairs with anti-slip surface providing safe, easy access. Option 2, 3, 4, 5 or 6 steps.





### DOCK CONNECTOR

Movable aluminum hinge on the track that can be used for different configurations. Unhooks upon removal of the hitch pin.



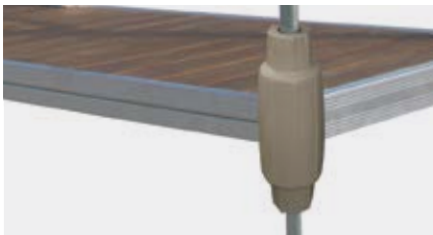
### STABILIZER

Aluminum, recommended for depths of more than 3' to improve the structure's stability.



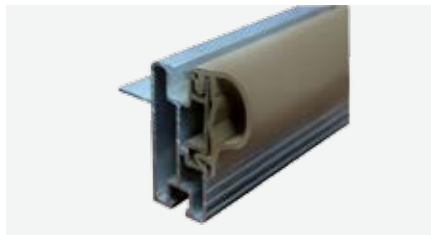
### VERTICAL BUMPER

Available in aluminum or vinyl, beige or black, protects boats above and below water level.



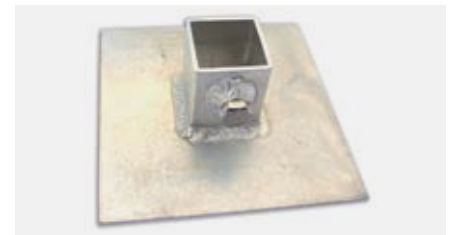
### TORPEDO BUMPER

Corner bumper available in beige or black. Installed on a post.



### VINYL BUMPERS

Added to the sides of the dock to protect your boat. No drilling required.



### BOTTOM PLATES

7" x 7" aluminum support plates providing greater stability in the bottom of the water.



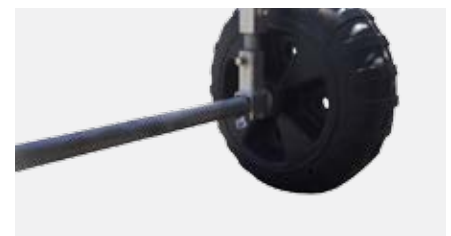
### STARTER BRACKET

Starter bracket allows you to attach your dock to a base. Available from 6" to 6'.



### CEDAR POSTS AND MANILLA ROPE

4" x 4" x 42" cedar posts and 1 1/2" manilla rope, for a beautiful finish to your installation.



### AXLE, BRACKETS, AND WHEELS

24" x 8" wheels with axle and fasteners for ease of moving and handling.



# EXCELLENT PROTECTION FOR YOUR BOAT

BERTRAND DOCKS EXPAND  
YOUR HORIZONS... AND YOUR  
BOAT'S SERVICE LIFE.

Since 1995, Bertrand Docks has been offering boat lifts that protect watercraft from wear and tear.

# MANUAL BOAT LIFTS

## WARNING

In addition to using the lift appropriately, the weight of the following elements must be taken into account in determining the capacity of your lift: the boat, motor, accessories, gas, and the water in the ballasts. Otherwise, Bertrand Docks will not be liable and the warranty will be null and void. Our boat lifts are not designed to lift people.



**CATAMARAN**



**M800 - M1200**



**M2000**



**M1200 VERTICAL 60" OR 98"**

## ADVANTAGES AND FEATURES

- Easy assembly with minimum maintenance
- Lightweight, durable structure
- All-aluminum structure with MIG-pulse welding (durable, corrosion resistant, and maintenance free)
- Stainless steel bolts and cables
- Bunk and side guides included in purchase price on models M2000 and above
- Aluminum/plastic centering rails
- V-shaped bunk for M3000 models and above
- Cantilever models (800 and 1200 lb. capacity)
- Vertical lift models (1200 to 5500 lb. capacity)



**M3000 - M3400**



**M3500 PONTOON**

# MANUAL BOAT LIFTS

## OPTIONS

- 12V motor
- 110V motor
- Transport kit with wheels
- Motor stop
- 20', 24', or 26' canopies and canopy for wakeboard tower, 9 colours of canvas with 50" overhang
- Vertical entry guide M2000 and above
- Adjustable legs, drilling required (M2000 and above)



**M4500**

## CHOICE OF CANVAS COLOURS

Colour options may vary.



**M5500**

MODEL	WIDTH	CAPACITY	WEIGHT	LEGS	LIFT	MADE FOR
Multimaster M800	72"	800 lb.	105 lb.	32"	36"	Rowboats and Sea-Doo
Multimaster M800-C	120"	800 lb.	180 lb.	32"	36"	Catamaran
Multimaster M1200	72"	1200 lb.	130 lb.	32"	36"	Rowboats and Sea-Doo
Multimaster M1200 vertical	60"	1200 lb.	140 lb.	32"	42"	Sea-Doo
Multimaster M1200 vertical	98"	1200 lb.	155 lb.	32"	42"	Rowboats
Multimaster M2000	98"	2000 lb.	280 lb.	64"	60"	12' to 17'
Multimaster M3000*	112"	3000 lb.	315 lb.	64"	60"	17' to 19'
Multimaster M3400	118"	3400 lb.	340 lb.	64"	60"	19' to 20'
Multimaster M3500	122"	3500 lb.	310 lb.	64"	60"	Pontoon
Multimaster M4500*	122"	4500 lb.	415 lb.	64"	60"	20' to 24'
Multimaster M5500*	122"	5500 lb.	610 lb.	64"	60"	24' to 28'

M2000 and above equipped with side guides. M3000, M3400, M4500, M5500 equipped with V-shaped bunk.

\* Option of adapting these models for pontoon boats.



# HYDRO-CABLE BOAT LIFTS



**HC4500 - HC8500**



Hydraulic pump

## ADVANTAGES AND FEATURES

- Enables you to lift and lower your boat with no physical effort
- Minimum maintenance
- Lightweight, durable structure
- Lift capacity of 4500 lb. or more
- Protects your boat from rubbing against the dock
- All-aluminum structure (durable, corrosion resistant, and maintenance free)
- Stainless steel hardware
- High-performance MIG-pulse welding
- Adjustable legs
- Hydraulic unit
- Cylinders containing environmentally-friendly biodegradable hydraulic oil
- 2 wireless remote lift mechanisms
- Manual control included
- 12 V and 24 V power supply (HC8500 model)
- Side guides included
- Adjustable V-shaped bunk
- Aluminum/plastic centering rails

## OPTIONS

- Canopy
- Transport kit with wheels
- Vertical entry guide
- Adjustable legs, drilling required
- Stop motor

MODEL	WIDTH	CAPACITY	WEIGHT	LEGS	LIFT	MADE FOR
Hydro-cable HC4500*	122"	4500 lb.	475 lb.	64"	52"	20' to 24'
Hydro-cable HC5500*	122"	5500 lb.	620 lb.	64"	52"	24' to 28'
Hydro-cable HC6500*	122"	6500 lb.	655 lb.	64"	52"	24' to 28'
Hydro-cable HC8500*	132"	8500 lb.	755 lb.	64"	52"	28' and above

\* Option of adapting these models for pontoon boats.

# HYDRO-LIFT

## BOAT LIFTS



**HL4500 TO HL15000**



### ADVANTAGES AND FEATURES

- Enables you to lift and lower your boat with no physical effort
- Minimum maintenance
- Lightweight, durable structure
- Lift capacity 15 000 lb.
- Protects your boat from rubbing against the dock
- The absence of cables eliminates the risk of wear and tear
- All-aluminum structure (durable, corrosion resistant, and maintenance free)
- Stainless steel hardware
- High-performance MIG-pulse welding
- Hydraulic unit
- Cylinders containing environmentally-friendly biodegradable hydraulic oil
- 2 wireless remote lift mechanisms
- Manual control included
- 12V power supply
- Vertical entry guide included
- Adjustable V-shaped bunk
- 4-wheel transport kit for HL series included

### OPTIONS

- Canopy
- Horizontal side guide
- Adjustable legs, drilling required

MODEL	WIDTH	CAPACITY	WEIGHT	LEGS	LIFT	MADE FOR
Hydro-lift HL1500	72"	1500 lb.	195 lb.	32"	48"	Rowboats and Sea-Doo
Hydro-lift HL4500*	132"	4500 lb.	432 lb.	48"	65"	21' to 24'
Hydro-lift HL6500*	132"	6500 lb.	570 lb.	48"	65"	23' to 27'
Hydro-lift HL8500*	132"	8500 lb.	615 lb.	48"	65"	24' to 32'
Hydro-lift HL10000*	132"	10 000 lb.	810 lb.	48"	72"	28' to 34'
Hydro-lift HL12000*	132"	12 000 lb.	930 lb.	48"	72"	30' to 36'
Hydro-lift HL15000	132"	15 000 lb.	1100 lb.	48"	72"	34' and above

\* Option of adapting these models for pontoon boats.



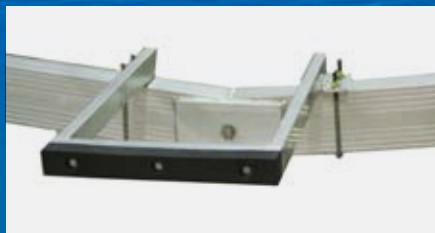
# LIFT ACCESSORIES

ACCESSORIES THAT MAKE  
A DIFFERENCE



## CANOPY

Protects watercraft and makes it unnecessary to remove and install protective tarps on a daily basis.



## MOTOR STOP

Protects the motor from being hit due to poor positioning in the boat lift.



## DIRECT-DRIVE MOTOR

12v or 110v motor, with optional 15' cord pendant for manual lift.



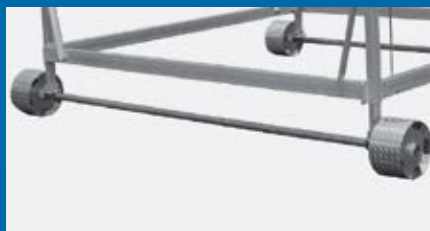
## TRANSPORTATION HANDLES

Provides easier handling when manipulating the lift.



## CENTRAL TRANSPORT WHEELS

Two 24" wheels mounted on a central lift system for effort-free use.



## 2-AXLE TRANSPORT KIT

4 aluminum 12" wheels mounted on 2 axles that can be left in the water after installation.



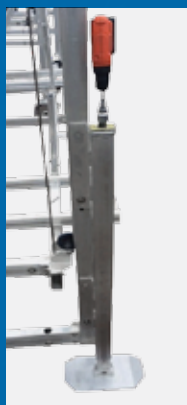
## ADJUSTABLE TRANSPORT KIT

4 independent 24" wheels provide stability and facilitate movement.



## SOLAR PANEL

20W solar panel. Charge controller and battery box that can be used with a 12V direct drive motor.



## ADJUSTABLE LEGS, DRILLING REQUIRED

Allows you to easily adjust and level your lift. Rise up to 48". 15/16" socket required.



## VERTICAL ENTRY GUIDE

Provides protection and visual help when centering your boat. Height 60".



## **A SOLID GUARANTEE, REFLECTING THE QUALITY OF OUR PRODUCTS**

Bertrand Docks guarantees its aluminum structures and welding for a five-year period, and the mechanics and all accessories that it manufactures for a two-year period. This warranty applies to the normal use of the product under normal conditions.

During the warranty period, Bertrand Docks will repair or replace the product, as required, free of charge upon presentation of the invoice. This warranty does not apply to a product that has been used improperly, damaged accidentally, or left in the water during the winter. Bertrand Docks is not responsible for the lake or river bottom.

Our guarantee applies to the initial buyer only. The guarantee does not cover installation and removal fees. Please refer to the full text at [quaisbertrand.com](http://quaisbertrand.com).

### **QUEBEC**

9371 Bourque Blvd.  
Sherbrooke (Quebec)  
CANADA J1N 0G2

### **ONTARIO**

102 St-David Street  
Noëlville (Ontario)  
CANADA P0M 2N0

[quaisbertrand.com](http://quaisbertrand.com)  
[info@quaisbertrand.com](mailto:info@quaisbertrand.com)  
Tel.: 819-847-1555  
Fax: 819-847-3555